

★ **ALMOST** ★  
**SOLD OUT**



**REDISCOVER**  
PROPERTY

**REGISTERED  
LOTS FOR SALE**

**1895 Camden Valley Way  
Horningsea Park  
(Edmondson Park) NSW**

- Lots From 300 sqm
- More Sizes Available
- Choice Your Own Builder
- Established Neighborhood

**Selling Fast**

Contact:-

Rhythm Joshi 0451 971 107

DJ Joshi 0456 789 777

Rhythm@rediscover.com.au



Rediscover Property Pty Ltd ABN 21 611 124 540  
License No 10062271  
Level 5, 4 Columbia Court Norwest NSW 2153  
Mobile 0451 971 107  
rhythm@rediscover.com.au  
www.rediscoverproperty.com.au

**Your opportunity to build a brand-new home in a thriving community with**

# **GREENLANDS HORNINGSEA PARK**

**limited registered lot available**

Build Packages Available

**Choice of Your own Builder**

## Location

Enjoy the convenience of being in close proximity to everything that matters.

Edmondson Park Town Centre is around the corner to look after your shopping, dining and entertainment needs.

- Walk to Woolworths Prestons approx. 650 meters
- Walk to William Carey Christian School
- Edmondson Park Station at approx. 6 minutes drive
- Liverpool CBD at approx. 15 minutes drive

Secure your future in growth area nearby Western Sydney International Airport.

**Lot Prices starting from \$600,000** and varies on basis of size, location etc.

## Enquiries to:

Rhythm Joshi: 0451 971 107 [rhythm@rediscover.com.au](mailto:rhythm@rediscover.com.au)

DJ Joshi: 0456 789 777 [dj@rediscover.com.au](mailto:dj@rediscover.com.au)




Illustration Purposes Only

Camden Valley Way

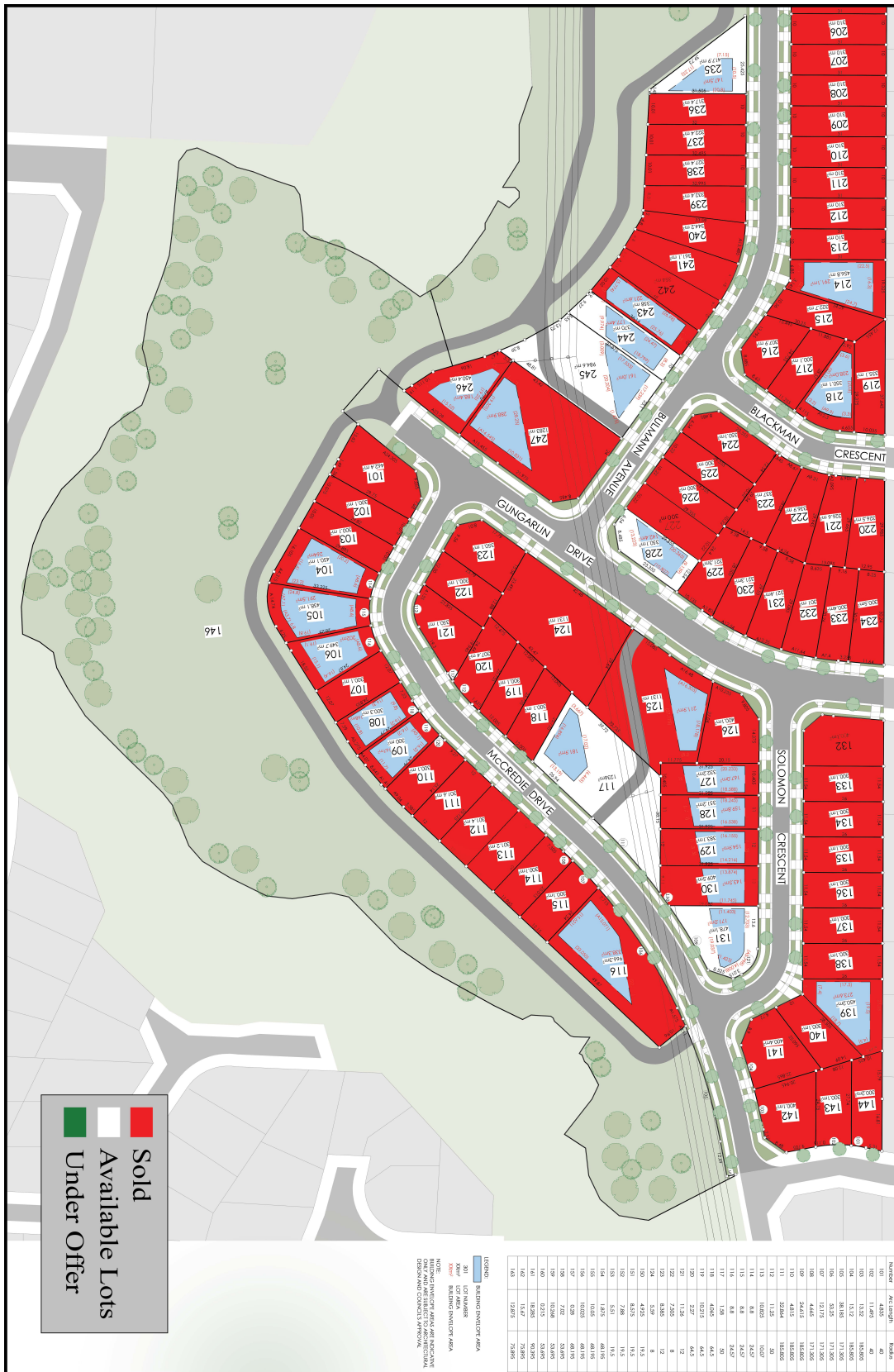
William Carey  
Christian School

woolworths prestons

Source: <https://maps.six.nsw.gov.au/>

	Sold
	Available Lots
	Under Offer





**Legend**

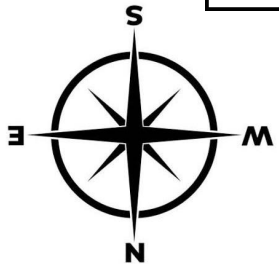
- Sold
- Available Lots
- Under Offer

**LEGEND**

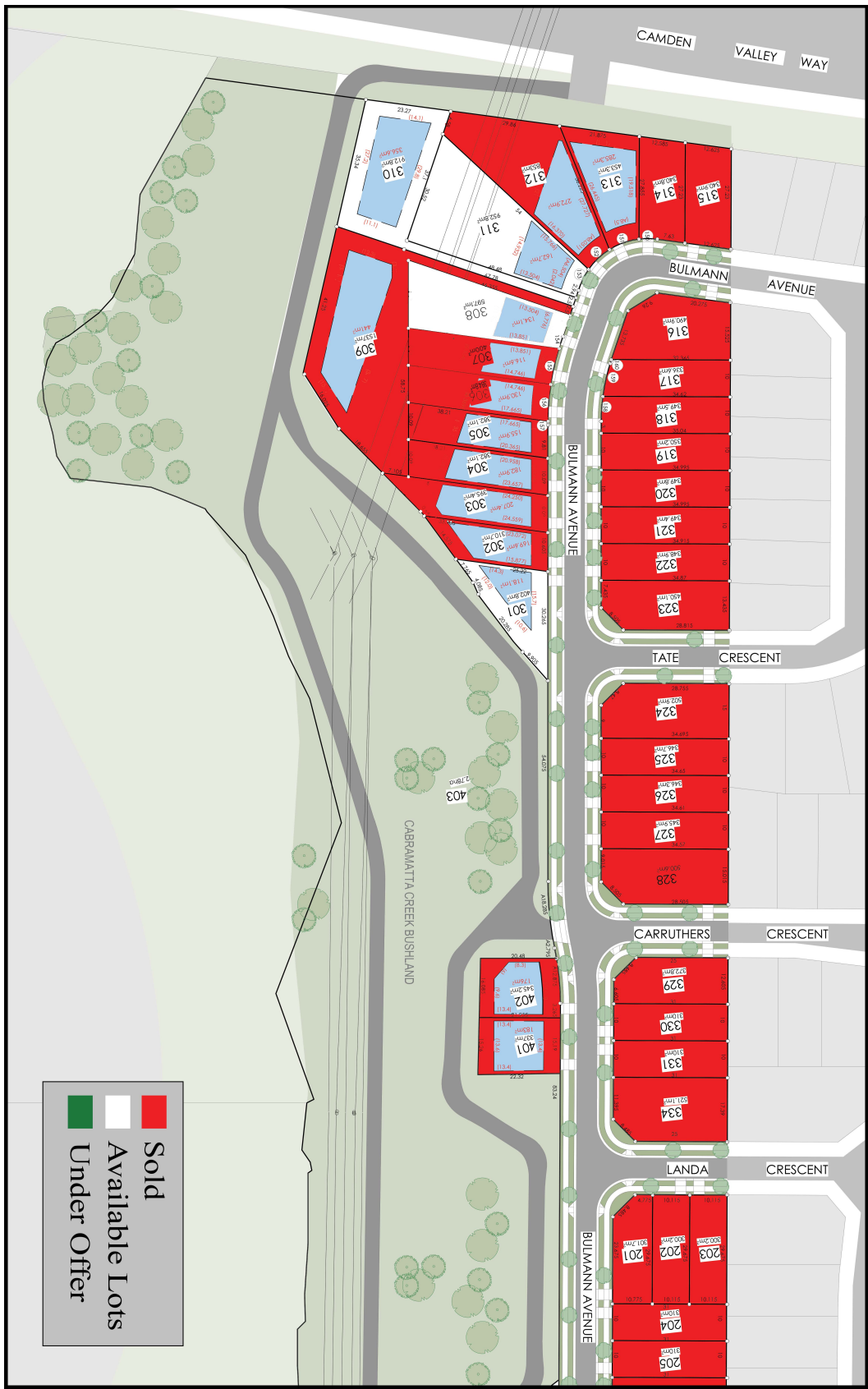
- BUILDING ENVELOPE AREA
- LOT NUMBER
- LOT NUMBER
- BUILDING ENVELOPE AREA
- BUILDING ENVELOPE AREA

NOTES: DIMENSIONS ARE APPROXIMATE. DIMENSIONS ARE SUBJECT TO ADJUSTMENT. DIMENSIONS ARE SUBJECT TO ADJUSTMENT. DIMENSIONS ARE SUBJECT TO ADJUSTMENT.

Lot No.	Area (sq.m)	Area (sq.ft)
101	114.95	40
102	114.95	40
103	114.95	40
104	114.95	40
105	114.95	40
106	114.95	40
107	114.95	40
108	114.95	40
109	114.95	40
110	114.95	40
111	114.95	40
112	114.95	40
113	114.95	40
114	114.95	40
115	114.95	40
116	114.95	40
117	114.95	40
118	114.95	40
119	114.95	40
120	114.95	40
121	114.95	40
122	114.95	40
123	114.95	40
124	114.95	40
125	114.95	40
126	114.95	40
127	114.95	40
128	114.95	40
129	114.95	40
130	114.95	40
131	114.95	40
132	114.95	40
133	114.95	40
134	114.95	40
135	114.95	40
136	114.95	40
137	114.95	40
138	114.95	40
139	114.95	40
140	114.95	40
141	114.95	40
142	114.95	40
143	114.95	40
144	114.95	40
145	114.95	40
146	114.95	40



**Indicative Plan Only**



Indicative Plan Only

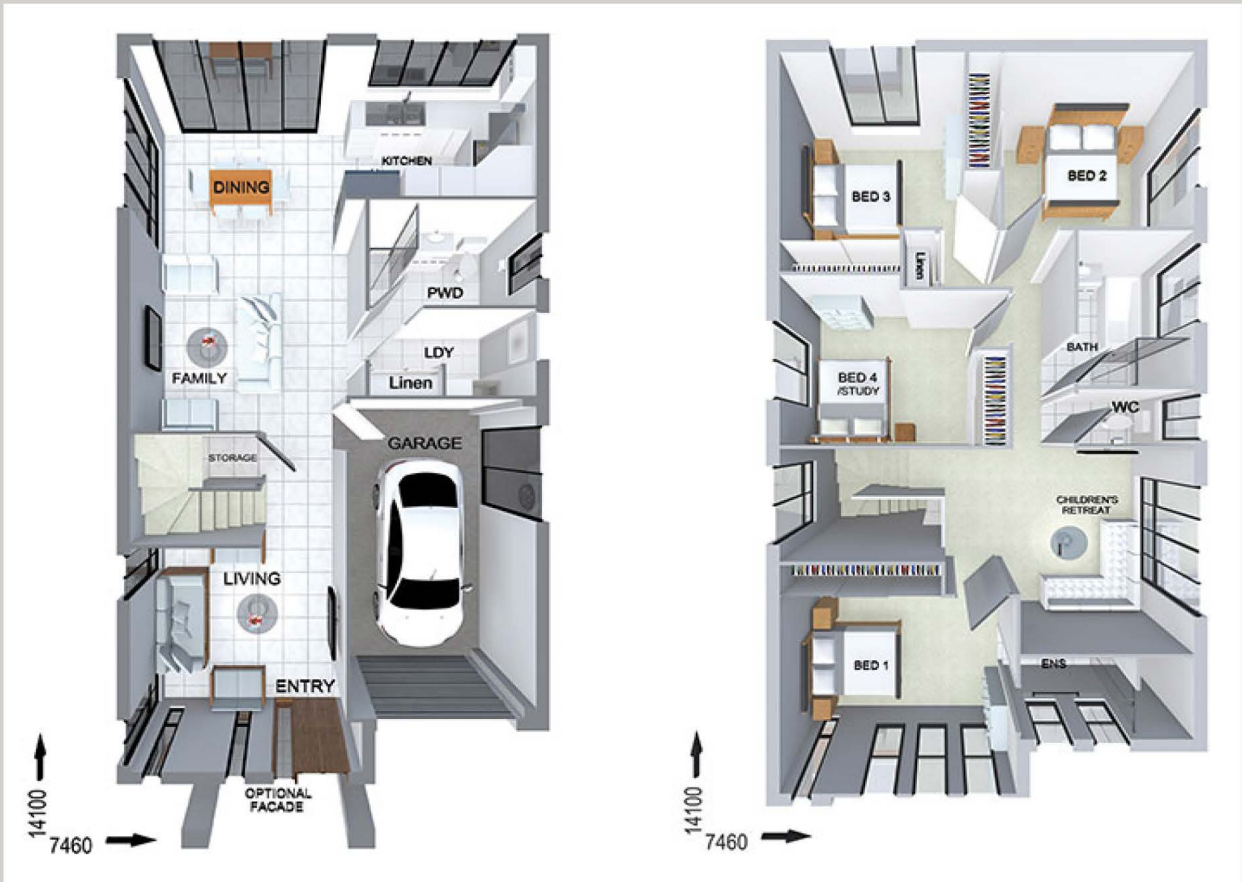
# GREENLANDS HORNINGSEA PARK

GREENLANDS HORNINGSEA PARK			
Lot No.	Area(m <sup>2</sup> )	Sale Price	Address
117	1235.7	\$900,000	73 McCredie Drive
131	479.1	\$860,000	11 Solomon Crescent
228	350.1	\$680,000	89 Bulmann Avenue
235	404.8	\$810,000	104 Bulmann Avenue
244	370	\$740,000	122 Bulmann Avenue
245	984.6	\$850,000	124 Bulmann Avenue
301	407.1	\$740,000	70 Bulmann Avenue
308	597.2	\$660,000	56 Bulmann Avenue
310	912.8	\$1000,000	52 Bulmann Avenue
311	952.8	\$720,000	50 Bulmann Avenue

**Lots availability and price subject to change without notice**

# Builder's Illustration

# LOT 307



DESIGN: FC0884

LAND SIZE: 400M2



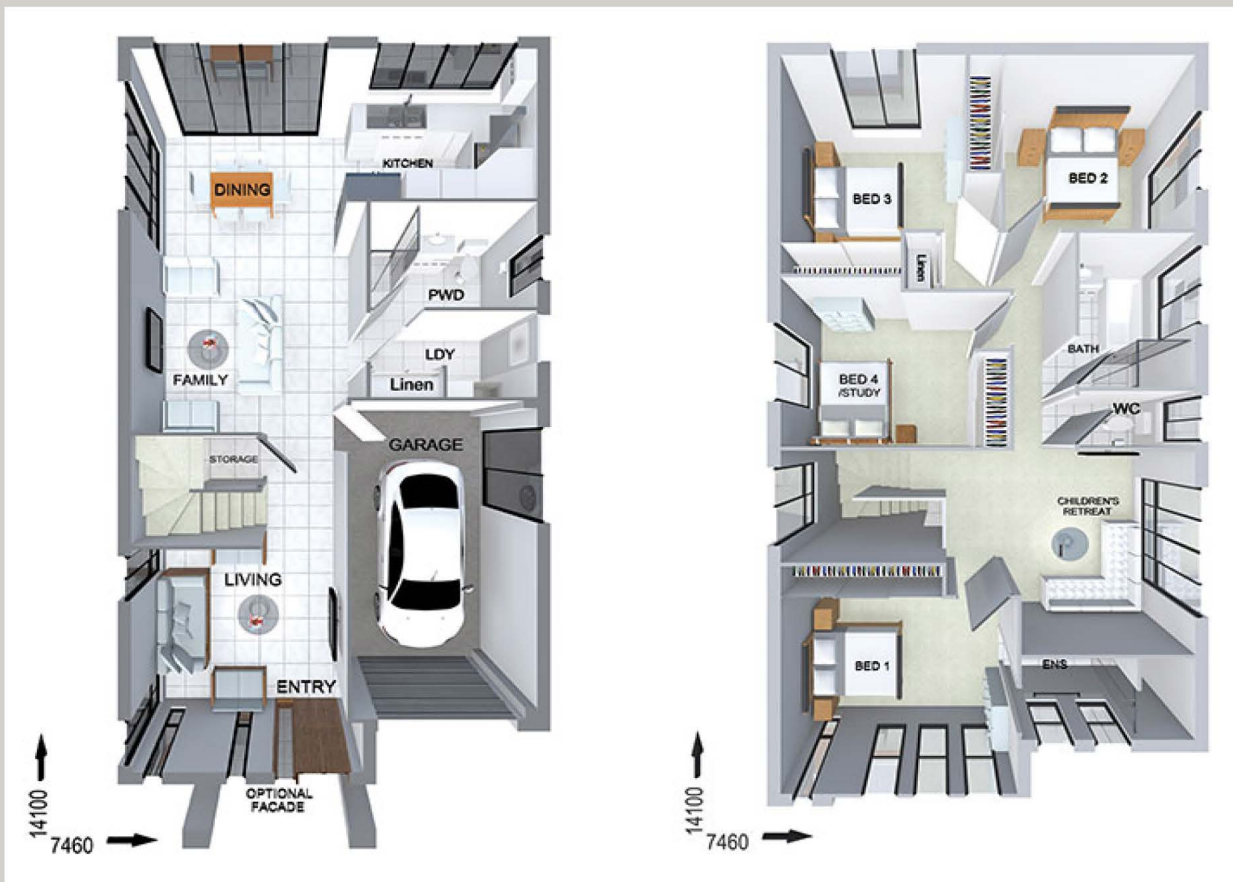
## RESORT PACKAGE INCLUSION:

- All Site Works
- Floor Coverings
- Ducted Air Conditioning
- 900 mm Stainless Steel Cooktop and Oven
- Stainless Steel Built-in Microwave
- Dishwasher
- Double Bowl undermount Sink
- 20mm Stone to Kitchen Island
- Bulkhead and shadow linen to all overhead cupboards
- Hettich Soft-Close hinges to Cupboards and Draws
- 3 Coat Dulux paint system
- Shark Nose (finger pull) Cupboard doors.
- Melamine Shelves to Linen and Pantry
- 20mm Stone benchtops to Bathroom, Ensuite and Laundry
- Fibreglass flyscreens to windows
- Remote Garage door opener



# Builder's Illustration

# LOT 308



DESIGN: FC0884

LAND SIZE: 597M2

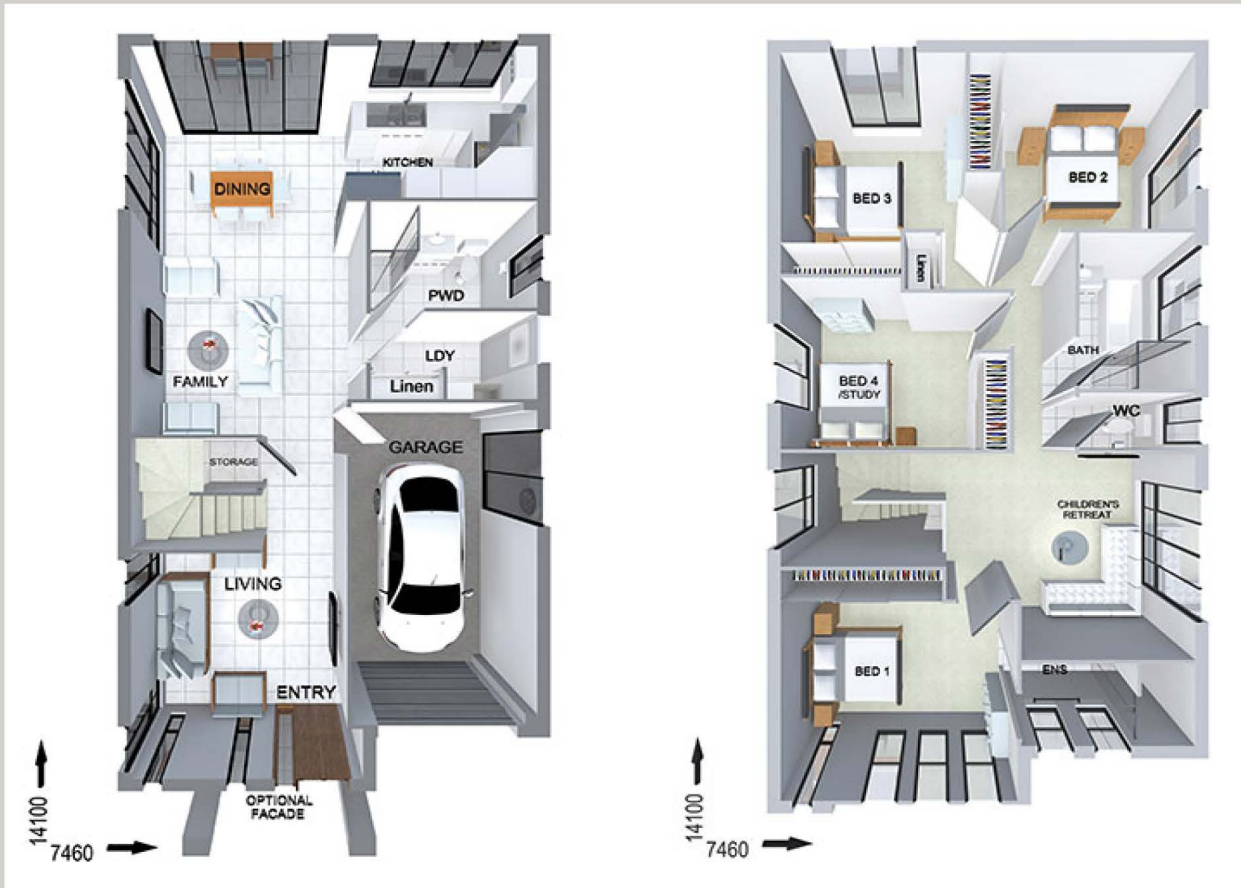


## RESORT PACKAGE INCLUSION:

- All Site Works
- Floor Coverings
- Ducted Air Conditioning
- 900 mm Stainless Steel Cooktop and Oven
- Stainless Steel Built-in Microwave
- Dishwasher
- Double Bowl undermount Sink
- 20mm Stone to Kitchen Island
- Bulkhead and shadow linen to all overhead cupboards
- Hettich Soft-Close hinges to Cupboards and Draws
- 3 Coat Dulux paint system
- Shark Nose (finger pull) Cupboard doors.
- Melamine Shelves to Linen and Pantry
- 20mm Stone benchtops to Bathroom, Ensuite and Laundry
- Fibreglass flyscreens to windows
- Remote Garage door opener

# Builder's Illustration

# LOT 311



DESIGN: FC0884

LAND SIZE: 952M2

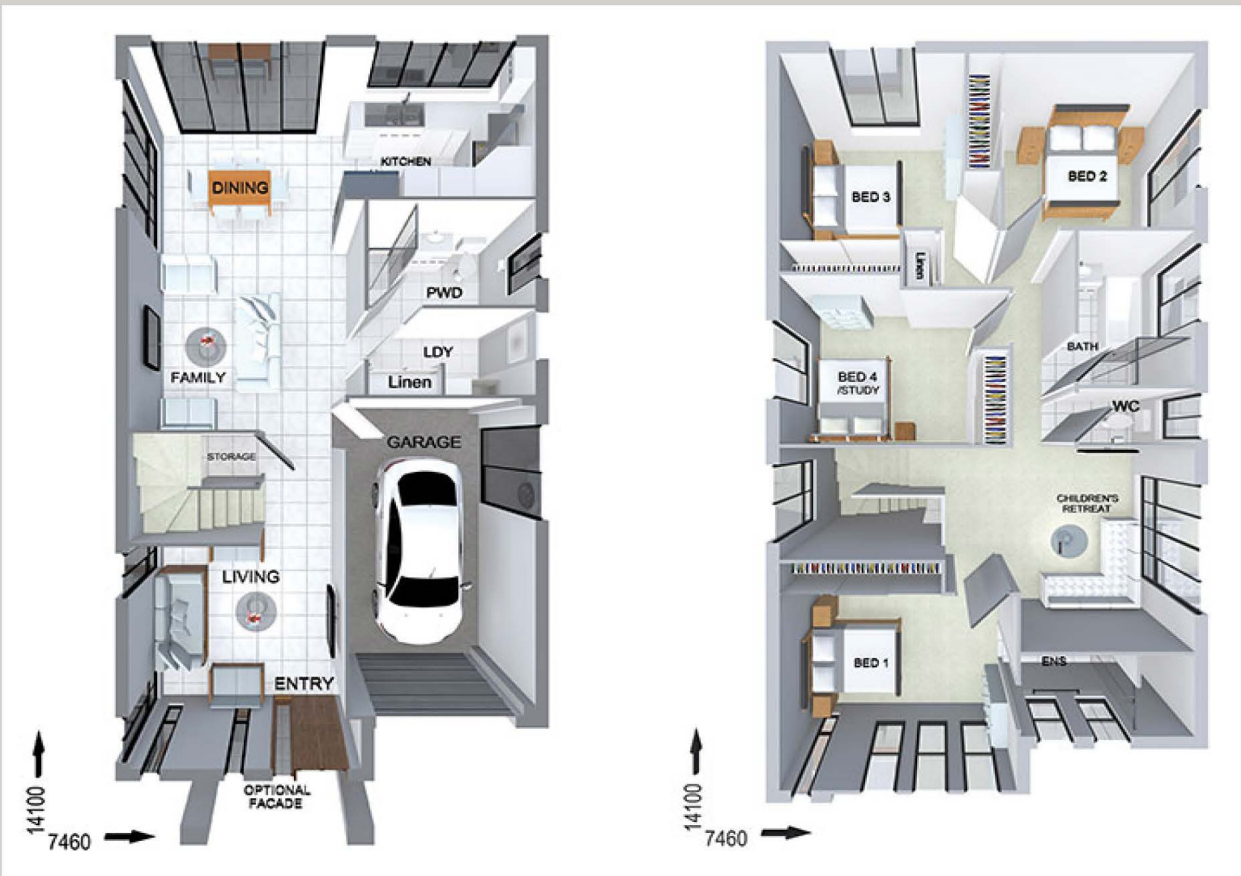


## RESORT PACKAGE INCLUSION:

- All Site Works
- Floor Coverings
- Ducted Air Conditioning
- 900 mm Stainless Steel Cooktop and Oven
- Stainless Steel Built-in Microwave
- Dishwasher
- Double Bowl undermount Sink
- 20mm Stone to Kitchen Island
- Bulkhead and shadow linen to all overhead cupboards
- Hettich Soft-Close hinges to Cupboards and Draws
- 3 Coat Dulux paint system
- Shark Nose (finger pull) Cupboard doors.
- Melamine Shelves to Linen and Pantry
- 20mm Stone benchtops to Bathroom, Ensuite and Laundry
- Fibreglass flyscreens to windows
- Remote Garage door opener

# Builder's Illustration

# LOT 312



DESIGN: FC0884

LAND SIZE: 853M2



## RESORT PACKAGE INCLUSION:

- All Site Works
- Floor Coverings
- Ducted Air Conditioning
- 900 mm Stainless Steel Cooktop and Oven
- Stainless Steel Built-in Microwave
- Dishwasher
- Double Bowl undermount Sink
- 20mm Stone to Kitchen Island
- Bulkhead and shadow linen to all overhead cupboards
- Hettich Soft-Close hinges to Cupboards and Draws
- 3 Coat Dulux paint system
- Shark Nose (finger pull) Cupboard doors.
- Melamine Shelves to Linen and Pantry
- 20mm Stone benchtops to Bathroom, Ensuite and Laundry
- Fibreglass flyscreens to windows
- Remote Garage door opener

<https://home-co.com.au/prestons>



**WILLIAM CAREY  
CHRISTIAN SCHOOL**  
<https://wccs.nsw.edu.au/>





## Edmondson Park Station



### Routes from this stop

T2	Parramatta or Leppington to City	>
T2	City to Parramatta or Leppington	>
T5	Leppington to Richmond	>
T5	Richmond to Leppington	>
T8	Macarthur to City via Airport or Sydenham	>
T8	City to Macarthur via Airport or Sydenham	>

**DISCLAIMER:** While Rediscover Property have taken all care in preparing this information to ensure that the information contained herein is true and accurate, we accept no responsibility and disclaim all liability in respect of any errors, inaccuracies or misstatements contained. Rediscover Property urges prospective purchasers to make their own enquiries to verify the information contained herein.